

SCIENTIFIC PROGRAMME

2018 Joint EAZWV/AAZV/Leibniz-IZW Conference

October 6 - 12
Prague, Czech Republic

Continuing Education Credits Provided by:



Leibniz Institute for Zoo
and Wildlife Research
IN THE FORSCHUNGSVERBUND BERLIN E.V.



PRAGUE ZOO



AAZV
AMERICAN ASSOCIATION OF ZOO
VETERINARIANS



EAZWV

Welcome!

Welcome to the 2018 Joint EAZWV/AAZV/Leibniz-IZW Zoo and Wildlife Health Conference in Prague. It is a great honour for us to be able to welcome top professionals from around the world here in the capital of the Czech Republic, and that Prague Zoo could also contribute a small part to the organization of this meeting.

When I was pondering over how to introduce our zoo to you, I decided to confine myself to just a few basic facts and to use the remaining space to talk about someone whose story, I think, may be meaningful to you.

Prague Zoo's logo has five stylized animal footprints:

The yellow lion footprint reminds us of one of the first animals at Prague Zoo - Šárka the lioness. She was seen by the first visitors to our zoo - or more precisely its construction site - on September 28th, 1931. The lion's footprint also symbolizes the popularity of the animal personalities and the popularity of the zoo. It is currently visited by more than 1.4 million visitors each year.

The red bird footprint draws attention to Prague Zoo's globally important breeding successes, such as the first hatching of an Andean condor in 1937.

As for significant breeding in recent years, I would like to mention, Asian elephants, aardvarks, giant anteaters, Malayan tigers, Malayan tapirs, Javan gibbons, palm cockatoos, Javan green magpies, Komodo dragons or crowned river turtles.

The orange footprint of the Przewalski's horse emphasizes Prague Zoo's contribution to the rescue of this species, as well as the protection of many other endangered animals. We keep the World Stud Book for Przewalski's horses and every year, in cooperation with the Czech Army, we carry out an air transport to the Mongolian Gobi. Of the other projects I would like to mention, there is the Wandering Bus, which promotes environmental education in Cameroon, or the fact that we have been entrusted with the management of 13 European or international studbooks and three EAZA EEP breeding programmes.

The blue footprint of the Komodo dragon symbolizes the zoo's development in the aftermath of the major floods that hit in 2002 and 2013, and the rise in its importance at an international level. For that matter, our Komodo dragon breeding has attained world renown.

Finally, the green footprint of the Chinese giant salamander, which inspired Karel Čapek to write one of his most famous works "War with the Newts", draws attention to the wider cultural significance of zoos and, moreover, to the fact that we do not want to merely present superficially attractive animals to the public. You should certainly pay our giant salamander house a visit!

So let's turn to the story that I promised at the opening.

In connection with your conference I would like to tell you a little about the fate of a veterinarian, a soldier and above all the "war director" of Prague Zoo, MVDr. Jan Vlasák. His

entries in the zoo's annals are truly written in gold. During the Second World War - at the time when Czechoslovakia was occupied by Nazi Germany - he not only managed to protect Prague Zoo from the occupying forces, but even managed to develop it further. In addition, he successfully instigated the utterly unheard of artificial rearing of a polar bear.

Jan Vlasák was born in 1893 and on the eve of the First World War he studied at the Military Veterinary Academy in Vienna. Immediately after completing his studies he returned to Galicia and enlisted as a soldier in the Austro-Hungarian monarchy, which ruled over the Czech lands at the time. He survived almost the entire Great War in the hell of the Eastern Front. After the war's end and the creation of Czechoslovakia, he joined the Czechoslovak Army, where he gradually reached the rank of Lieutenant Colonel. The assessments in his personal file portray him as a diligent, conscientious and capable man with a very good social manner, who practiced gymnastics, tennis, swimming, archery, shooting, skating and motor sports.

Following the occupation of Czechoslovakia by the German army and the subsequent dissolution of the Czechoslovak Army, he was assigned to Prague Zoo in October, 1939, where he became the head of its management (director in modern terminology). A long-time zoo worker, Ing. Antonín Turek, later recalled Vlasák's activities in the war years as follows: "To his credit, he built an exemplarily managed establishment with a warehouse for feed, a game kitchen, repair workshops and its own agricultural production of both plant and animal origin. A well-equipped veterinary unit was set up in the same building with a dissecting room, a laboratory and a small animal clinic that was even equipped with an X-ray. He introduced his military precision into the establishment by building a science library, keeping thorough records on the animals and other organizational changes. At the time, he ran the zoo under very demanding conditions, which required personal determination and fortitude."

Dr Vlasák was in an extremely difficult role, not only because of the shortages due to the war, but also because he had to deal with the occupiers and the protectorate authorities - whilst at the same time hiding the zoo staff's resistance activities. On top of all this he worked as a zoo veterinarian; in 1942, he achieved significant results in the treatment of gapeworm in exotic birds. It is no wonder that he did not have a single holiday during his tenure at the zoo.

Naturally, when evaluating Vlasák's contribution to Prague Zoo, I must emphasize his successes as a breeder. It to his great credit, for instance, that he developed the breeding of Przewalski's horse. But above all, he took care of the aforementioned artificial rearing of a polar bear. This was at the turn of 1942 and 1943, when he and his wife reared the young cub that the polar bear Nora gave birth to; this was done in their flat in Prague Zoo's administrative building. A detailed report on this absolutely unique event was published in 1950 in the journal "Der Zoologische Garten" printed in Leipzig. However, the international fame of this polar bear reared by Dr Vlasák must be dated to 1947, when he presented a film and photographs at the meeting of the London Zoological Society. On the basis of this presentation a book, "Snow White, the Story of a Polar Bear Cub", was published in London in 1949, and in 1951 it came out in New York as "Snowy: The Story of a Polar Bear Cub".

By then, however, Dr Vlasák was no longer working at Prague Zoo. In 1946, he returned to the army and served at the Ministry of Defence in the rank of Colonel until 1954. His

personal file closes with his request to be allowed to wear his military uniform in retirement. He died in 1957.

In 2012, not only did we publish his book on Snowy, we also unveiled a sculpture as a constant reminder of how he reared a polar bear and all his work for Prague Zoo.

I would be very pleased indeed if you could visit us at Prague Zoo and remember a colleague who did so much for it. I firmly believe you will enjoy your stay in Prague and I wish your conference every success!

Miroslav Bobek, Director of Prague Zoo

Alex D. Greenwood
Kristin Mühldorfer
Steven Seet
Josepha Prügel
Stefanie Lenz
Heribert Hofer

Jaroslav Šimek
Roman Vodička
Lucie Šašková
Miroslav Bobek

Stephanie Sanderson
Hugo Fernández Bellon
Sabine Öfner
Kim Gruetzmacher
Hanspeter Steinmetz

Robert Hilsenroth
Allison Tuttle
Sam Rivera
Alicia Hahn
Adine Nicholson
Kathy Judge Blacklock
Mike Adkesson



Leibniz Institute for Zoo
and Wildlife Research
IN THE FORSCHUNGSVERBUND BERLIN E.V.

*Leibniz Institute for
Zoo and Wildlife
Research (Leibniz-IZW)
Berlin
Germany*



PRAGUE ZOO

*Prague zoological
garden
Prague,
Czech Republic*



*European Association
of Zoo and Wildlife
Veterinarians (EAZWV)
Liebefeld-Berne
Switzerland*



*American Association
of Zoo Veterinarians
(AAZV)
Yulee, Florida
USA*



This booklet is printed on recycled paper 😊 !

CONTENTS

Acknowledgement - Sponsors	5
Floor plan	8
Scientific programme - general information	10
Social events	12
Venues	16
Scientific programme	
Sunday, 7 th October	18
Monday, 8 th October	19
Tuesday, 9 th October	21
Wednesday, 10 th October	23
Thursday, 11 th October	24
Friday, 12 th October	25
Posters	26
Sightseeing	36
Organisation	40
Contact	41



Photos: Prague zoological garden © Hamernik Petr

ACKNOWLEDGEMENT - SPONSORS

We wish to thank the supporters of the conference:



Edition Chimaira



innovative technology for science and research

Continuing Education

Continuing education sponsored by the American College of Zoological Medicine



The ACZM is a registered veterinary specialty college by the American Veterinary Medical Association for sponsoring of continuing education credits. Individual States may have different laws or policies on acceptability of conferences, meetings or courses to qualify for continuing education (CE) credit. You are advised to check with the State(s) in which you are licensed to ensure that the CE credits provided are acceptable.



ITER AD TUENDAM NATURAM

ON THE ROAD, PROTECTING THE NATURE

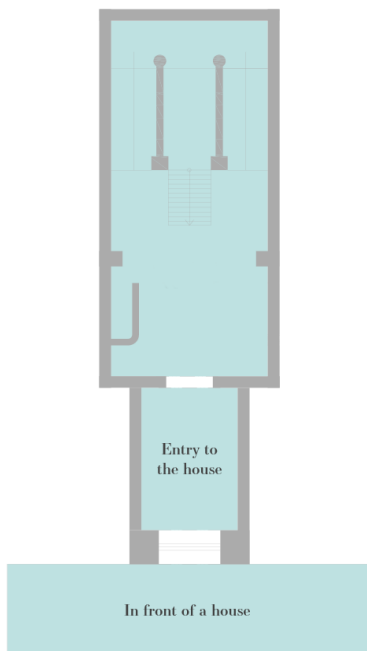
**WE SERVE WITH HONOR, DILIGENCE, DISCRETION AND HONESTY;
WE ARE ENTERTAINED BY ADVENTURE,
INSPIRED TO CREATE UNIQUENESS;
WE RESPECT AND CARE FOR PEOPLE AND ANIMALS**



FLOOR PLAN: CONFERENCE VENUE

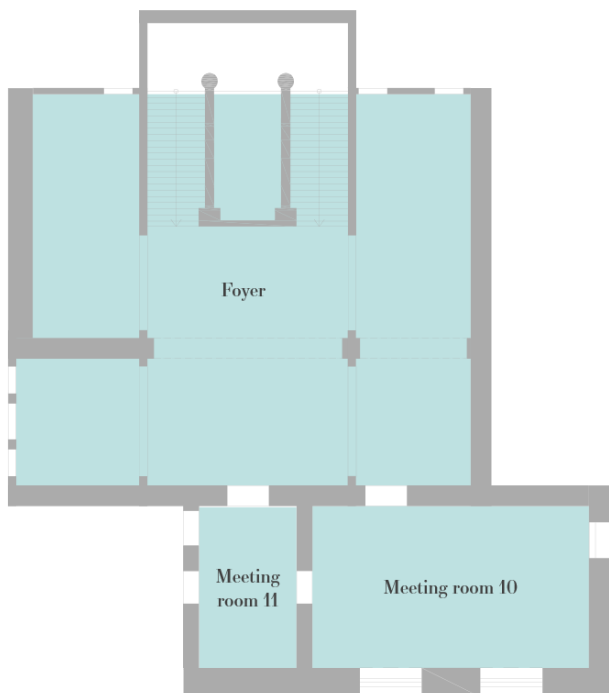
(National House of Vinohrady)

GROUND FLOOR



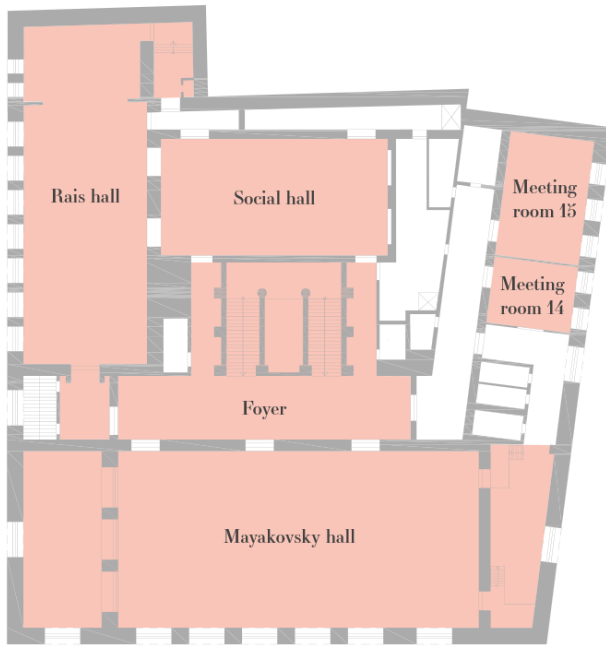
- 5rd floor
- 2nd floor
- 1st floor
- you are here

1ST FLOOR



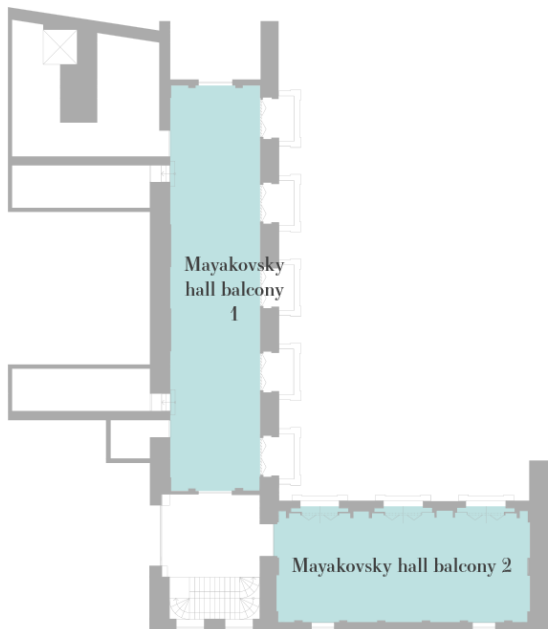
- 5rd floor
- 2nd floor
- you are here
- ground floor

2ND FLOOR



- 5rd floor
- you are here
- 1st floor
- ground floor

3RD FLOOR



- you are here
- 2nd floor
- 1st floor
- ground floor

SCIENTIFIC PROGRAMME – GENERAL INFORMATION

COPYRIGHT REGULATIONS

Please note that in your own interest and for copyright reasons it is strictly forbidden to take pictures, videos and sound recordings of any conference contribution especially unpublished data during the whole conference. This includes especially talks, discussions, posters and round table discussions. You may not take pictures or copies of slide shows, posters and abstracts from the Conference Proceedings. You may not use twitter, facebook & Co to distribute unpublished data. Pictures may be taken only upon authorisation by the authors and/or copyright holders. Anyone who violates the copyrights will be expelled from the conference and they are accountable to the law if they violate copyrights or steal data.

PRESENTATIONS AT THE CONFERENCE

There will be three different forms of presentations at the conference: plenary talks, oral contributions and poster contributions.

All presentations will be held at the conference centre at the National House of Vinohrady in **Prague, Czech Republic**. There will be four **plenary talks**, one at the beginning of each morning session from Monday till Thursday. The last plenary talk will be held on the Thursday morning session. Contributed talks will be held in **22** sessions and are scheduled with 8, 10 or 12 min (depending on the session) followed by 1-2 min of discussion. The session chairs will keep a strict schedule.

PowerPoint presentations require a USB-stick containing all necessary files. **Speakers are asked to hand in their USB flash drive at the registration desk to receive their registration documents.** For technical reasons, individual laptops will only be hooked up to the projector in rare exceptions after prior agreement with the organisers.

Posters are displayed in the conference centre and can be viewed at all times. Posters are arranged alphabetically. **Contributors of posters are requested to present their posters in person during the Poster Pasta Party** (Tuesday, 18:30 - 20:30). Poster mounting starts on Sunday, October 7, at 14:00. Posters should be removed by Thursday, October 11, 20:00. All posters not removed by this time will be disposed of.

Workshops 1 – 9 are scheduled for Sunday, 7th October (for times, durations, and locations please see below).

- 1. Clinical Techniques in Lagomorphs and Rodents**
(09:00 – 13:00, Czech University of Life Sciences Prague, Faculty of Agrobiological Sciences, Food and Natural Resources)
- 2. Avian Handling**
(09:00 – 13:00, Prague Zoo)
- 3. Advanced Anaesthesia**
(09:00 – 17:00, Prague Zoo)
- 4. Online Literature Searching Skills Lab**
(09:00 – 13:00, National House of Vinohrady)
- 5. Using Outbreak software for modeling infectious disease in wildlife populations**
(09:00 – 13:00, National House of Vinohrady)
- 6. AAZV 25th Annual Zoo and Wildlife Pathology Workshop**
(09:00 – 17:00, National House of Vinohrady)

- 7. Great Ape Health Masterclass with an Emphasis on Cardiac Disease**
(09:00 – 17:00, National House of Vinohrady)
- 8. Joint EAZA/AZA Vet Advisors Workshop**
(13:30 – 17:30, National House of Vinohrady)
- 9. ECZM-ACZM Ultrashort course**
(08:00 – 18:00, National House of Vinohrady)

All workshop participants will receive a name badge, which ensures free entry to the workshop areas throughout the day. This is also your name badge for the conference and ensures access to all conference areas.

Roundtable discussions (parallel sessions) are scheduled for **Thursday, 11th October (14:30 – 15:30)** in the main conference venue (National House of Vinohrady).

- Animal welfare & wellness
- Elephant herpes virus update
- ZIMS for vets
- Conservation by Zoo Vets

Rudolf Ippen Young Scientist Award, IZW/EAZWV. The “Rudolf Ippen Young Scientist Award” was awarded for the first time in Madrid in 2010, in memory of the internationally acclaimed scientist Prof Dr Rudolf Ippen, who passed away in March 2009.

The award will go to a young scientist whose research demonstrates challenging and innovative ideas and/or offers useful practical or theoretical knowledge to the work of a broad spectrum of zoo and wildlife veterinarians, biologists and other wildlife scientists.

Application for 2019: Please send your CV, list of publications (at least one as first author), and a PDF copy of the three most important publications of the last 12 months to: 2018@zoowildlifehealth.org.

AAZV Manuscript competitions. The top presentations in the Graduate Degree Program Competition and the Post-graduate Veterinarian Competition will be recognized with awards during the closing session scheduled between **12:15** and **13:15** on **Friday, 12th October**.

Abstracts of all scientific contributions to the conference are published in the “Proceedings of the 2018 Joint EAZWV/AAZV/Leibniz-IZW Conference”.

In this “Conference Programme” booklet, the page number at the end of the title of each contribution indicates the page number of the corresponding contribution in the published proceedings.

Networking

- 1. ACZM annual meeting:** Sunday, 7th October, 10:00 – 13:00
- 2. Committee and working group meetings:**
Monday, 8th October, 17:30 – 19:30
Tuesday, 9th October, 17:30 – 19:00
- 3. EAZWV student board meeting:** Monday, 8th October, 17:30 – 19:00
- 4. ECZM exam preparation course:** Wednesday, 10th October, 06:30 – 08:30
- 5. EAZWV general assembly (all members):** Thursday, 11th October, 10:45 – 12:15
- 6. AAZV business meeting (all members):** Thursday, 11th October, 10:15 – 12:00

SOCIAL EVENTS

Ice breaker (welcome evening), Sunday, 7th October, 17:30 – 20:00, conference venue

We will meet at the conference venue “National House of Vinohrady (NHV)” (Namesti Miru 9, 120 53 Prague 2) and greet colleagues over a variety of snacks and beverages.

Poster Pasta Party, Tuesday, 9th October, 18:30 - 20:30, conference venue

You will be invited to enjoy and discuss poster presentations while having some good pasta and drinks.

Students Night out, Tuesday, 9th October, after the Poster Pasta Party

Organised by the EAZWV Student Section, this event became a very popular part of the social programme over the past years. It is the ideal spot to socialise with fellow students from all over the world and exchange experiences and ideas over a cold beer.

Exact time and place will be announced at the EAZWV Student board Meeting (Monday, 8th October, 17:30 – 19:00), so do not miss it!

Contact: Sara Abreu (students@eazwv.org).

Zoo visit, Wednesday, 10th October, 13:45 - 21:00

Prague Zoo invites all conference attendees to visit their facilities on Wednesday afternoon and evening. The program will be completed with a dinner in the zoo restaurant (18:00 – 21:00).



Photos: Prague zoological garden entrance and elephants © Hamernik Petr

During your stay in Prague Zoo you will have the opportunity to test your skills in a darting competition or to look behind the scenes at various stations.

Timetable - behind the scenes stations:

Station	1.	2.	3.	4.	5.	6.
	Sea Lions	Indonesian Jungle House (IJL)	Elephant House	African House (Giraffes)	Giant Salamander House (GSH)	Veterinary Clinic
Times	14:00	14:30	14:00	14:30	14:00	Open: 14:00-17:30 (last visit)
	15:00	15:30	15:00	15:30	15:00	
	16:00	16:30	16:00	16:30	16:00	
	17:00	17:30				
Meeting point	Sea Lions exhibit	IJH visitor entrance	In front of Gulab restaurant/ near the fountain	Meerkats exhibit	GSH visitor entrance	Clinic
Capacity per visit	max 20	max 20	max 20	max 20	max 10	Not limited

If you would like to take part in one or more of these tours, please write your name on the registration list on the information board in the conference centre.

Shortly before the zoo dinner, we would like to take a joint photo of all conference attendees. Please get together at 17:50 at the Sea Lion's Amphitheatre.



How to get to the bus shuttle which will take you to Prague Zoo:

- you have to go to the underground station „I.P. Pavlova“:
Leave the conference venue and follow the street „Náměstí Míru“, then turn into the street „Jugoslávská“
- at underground station „I.P. Pavlova“ you take **line „C“** (→ Letňany) to „**Nádraží Holešovice**“ (ticket costs 32 CZK)
- bus shuttle will leave from bus stop for line no. 112 and will be **marked by conference banner behind the glass**

The whole ride will take approx. 14 minutes.

Bus shuttle schedule:

From „Nádraží Holešovice“ to the zoo

- 13:45, 14:00; 14:15, 14:30, 14:40, 14:50, 15:00, 15:10, 15:20

In the evening, the busses will leave at the zoo parking place

- 18:50, 19:10, 19:30, 19:50, 20:10, 20:30, 20:50, 21:10, 21:30

Free admission for conference participants to Prague Zoo

All **conference participants** and accompanying persons who have registered have free admission to Prague Zoo from Sunday, 7th October to Friday, 12th October. Please be prepared to present your name badge at the entrance gates to obtain free entry.

Student-mentor-mixer, Thursday, 11th October, 17:30 - 19:00, conference venue

This event is open to anyone registered as student. The aim is to provide students with the chance to meet some of their potential future mentors and/or employers. In a casual atmosphere students can get in touch with the mentors during short round-table discussions, ask questions and get advice regarding career path, work experience, training, etc.

Festive Evening - Medieval Night in Old Prague, Thursday, 11th October, 19:30 – 22:30

We are looking forward to a special evening in the medieval tavern “U Pavouka”! Enjoy a five-course menu of traditional Czech food while being entertained by a historical fantasy show with live music, jugglers, belly dancers and much more.

The festive evening includes 2,5 hours show, a five-course menu and beverages (wine, beer, softdrinks). Doors open at 19:30; the show and dinner starts at 20:00.

Address restaurant: Krčma U Pavouka, Celetná 597/17, 110 00 Praha 1 - Staré Město



© Krčma U Pavouka

Conference banquet, Friday, 12th October, 20:00 - 24:00, conference venue

The banquet is always one of the highlights of the conference. It will take place on the last evening in the main conference venue.



© National House of Vinohrady

Accompanying persons are very welcome to participate in all social events provided that a place is booked for them by a conference participant.

VENUES

Conference centre (registration, conference, lunch)

National House of Vinohrady (NHV)

Namesti Miru 9
120 53 Prague 2



© National House of Vinohrady

Workshops (on Sunday, 7th October)

National House of Vinohrady (NHV)

Namesti Miru 9
120 53 Prague 2

Prague Zoo

U Trojského zámku 120/3
171 00 Prague 7

Faculty of Agrobiolgy, Food and Natural Resources

(Fakulta agrobiologie, potravinových a přírodních zdrojů - FAPPZ)

Czech University of Life Sciences Prague

Kamýčká 129

165 00 Prague 6 - Suchdol

Building: FAPPZ-C (Institute of Veterinary Sciences – Katedra veterinárních disciplín)

Room: C1

Conference registration & information desk

The conference office is directly located at the conference centre National House of Vinohrady (Foyer 1st Floor).

Opening times of the conference registration & information desk:

➤ Sunday	7 th October	07:30 - 17:30
➤ Monday	8 th October	07:00 - 17:30
➤ Tuesday	9 th October	07:30 - 17:30
➤ Wednesday	10 th October	08:00 - 13:00
➤ Thursday	11 th October	08:00 - 17:30
➤ Friday	12 th October	08:00 - 12:00

The staff at the registration and information desk will be happy to help you with any questions and problems regarding the conference.

Notice and communication boards for announcements, changes, waiting lists or additions to the programme will be located at the registration & information desk. Messages for other participants can be posted there, as well.

Coffee/tea and other refreshments will be served during breaks; **lunch** will also be served in the conference centre.

SCIENTIFIC PROGRAMME

7 th October	Sunday
	Workshops and meetings: parallel sessions Locations: Three locations as given below
07:30 - 17:30	Registration at conference venue (Foyer 1 st Floor)
The following workshop will be held at the Czech University of Life Sciences Prague, Faculty of Agrobiology, Food and Natural Resources:	
09:00 - 13:00	Clinical Techniques in Lagomorphs and Rodents Vladimír Jekl (Veterinary Clinic Jekl & Hauptman, Czech Republic)
The following two workshops will be held at Prague Zoo:	
09:00 - 13:00	Avian Handling Helena Vaidlova (Veterinary Clinic MADA, Czech Republic)
09:00 - 17:00	Advanced Anaesthesia Christine Lendl (Grünwald, Germany) Carsten Grøndahl (Copenhagen Zoo, Denmark)
The following workshops and meetings will be held at the National House of Vinohrady (NHV):	
09:00 - 13:00	Online Literature Searching Skills Lab Heather Moberly (Texas A&M University, USA)
09:00 - 13:00	Using Outbreak software for modelling infectious disease in wildlife populations Robert Lacy (Chicago Zoological Society, USA)
09:00 - 17:00	AAZV 25th Annual Zoo and Wildlife Pathology Workshop Bruce Rideout (San Diego Zoo Global, USA) Dalen Agnew (Michigan State University, USA)
09:00 - 17:00	Great Ape Health Masterclass with an Emphasis on Cardiac Disease Matyas Liptovszky (Twycross Zoo, UK)
10:00 – 13:00	ACZM annual meeting
13:30 - 17:30	Joint EAZA/AZA Vet Advisors Workshop Stephanie Sanderson (EAZWV, UK) Hayley Murphy (Zoo Atlanta, USA)
08:00 - 18:00	ECZM-ACZM Ultrashort course Hanspeter Steinmetz (EAZWV; Abenteuerland Walter Zoo, Schweiz)
17:30 - 20:00	ICE BREAKER/WELCOME EVENING (Conference venue)

8th October		Monday
07:00 - 17:30		Registration (Foyer 1 st Floor)
08:00 - 08:30		Opening ceremony (Steinmetz H, Greenwood AD, Adkesson M, Bobek M)
Session chairs	Backues K Casado Gomez A	Ethics and welfare
08:30	Sandøe P	PLENARY TALK: ZOOS AND ETHICS – WHAT ARE THE ISSUES, AND HOW CAN THEY BE ADDRESSED? (p. 1)
09:30	Chapman S	A PROACTIVE APPROACH TO IMPROVING THE WELFARE OF AGEING ZOO ANIMALS (p. 2)
09:43	Wendler P, Ertl N	FOOT HEALTH OF ASIAN ELEPHANTS (<i>Elephas maximus</i>) IN EUROPEAN ZOOS – STATUS REPORT AND INFLUENCING FACTORS (p. 5)
09:56	De Cuyper A	KILL FREQUENCIES IN TERRESTRIAL MAMMALIAN CARNIVORES: SPECIES DIFFERENCES AND IMPLICATIONS FOR FEEDING REGIMES (p. 7)
10:09	Lamglait B	ETHICAL CONSIDERATIONS FOR ELECTRO-IMMOBILIZATION IN ADULT BROOK TROUT (<i>Salvelinus fontinalis</i>) (p. 9)
10:22		Coffee break
10:50	Molter C	ANIMAL WELFARE INITIATIVES FOR AN EVENING HOLIDAY LIGHTS EVENT AT THE HOUSON ZOO (p. 10)
11:03	Pye G	HOW ZOO VETERINARIANS BECOME MORE VALUABLE: DELIVER ON ANIMAL HEALTH AND ORGANIZATIONAL HEALTH (p. 11)
11:16	Clauss M	CAPTIVITY, LIBERATION, CONSERVATION, THE WILD: RHETHORICS AND THE VALUE OF ZOOLOGICAL INSTITUTIONS (p. 13)
Session chairs	Hilton C Ruetten M	Hoofstock
11:30	Dadone L	COMPARING FOOT HEALTH OF ZOO AND FREE-RANGING GIRAFFE (p. 15)
11:45	Fontenot D	NEMATOPHAGOUS FUNGUS (<i>Duddingtonia flagrans</i>) PROGRAM INTEGRATION FOR TRICHOSTRONGYLE PARASITE CONTROL IN EXOTIC ARTIODACTYLID SPECIES (p. 16)
12:00	Marinkovich M	PERIPARTURIENT DISTAL LIMB SWELLING AND PERIOSTEAL REACTION IN SICHUAN TAKIN (<i>Budorcas taxicolor tibetana</i>): 5 CASES OF PRESUMPTIVE HYPERTROPHIC OSTEOPATHY (p. 18)
12:15	Shotton J	PITUITARY PARS INTERMEDIA DYSFUNCTION (EQUINE CUSHING'S DISEASE) IN NON-DOMESTIC EQUIDS (p. 20)
12:30		Lunch
Session chairs	Lung N Magnone W	Primates I
13:30	Danière C	EPIDEMIOLOGICAL AND CLINICAL ASPECTS OF <i>Taenia crassiceps</i> CYSTICERCOSIS IN LEMURS IN FRENCH ZOOS (p. 21)
13:45	Gardner S	REPORT ON THE CAUSES OF MORBIDITY AND MORTALITY IN THE SULAWESI MACAQUE (<i>Macaca nigra</i>) EUROPEAN ENDANGERED SPECIES PROGRAMME FROM 2005-2017 (p. 22)
14:00	Couture EL	HUMAN PARAINFLUENZA 2 RELATED ILLNESS AND DEATH IN CAPTIVE WESTERN LOWLAND GORILLAS (<i>Gorilla gorilla gorilla</i>) (p. 24)
14:15	Strong V	A COMPARISON OF THE EFFECTS OF AN α -2 AND NON- α -2 ANESTHESIA PROTOCOL ON THE ECHOCARDIOGRAPHIC AND PHYSIOLOGIC PARAMETERS OF ANESTHETIZED CHIMPANZEES (<i>Pan troglodytes</i>) (p. 26)

8 th October		Monday
Session chairs	Carpenter N Chenet B	Primates II: case reports
14:30	Gamble K	PROBABLE ENALAPRIL HEPATOTOXICITY IN A 15 YEAR OLD MALE WESTERN LOWLAND GORILLA (<i>Gorilla gorilla gorilla</i>) (p. 28)
14:40	Knauf-Witzens T, Schäufele T	PHARMACOLOGICAL TREATMENT OF A MALE BONOBO (<i>Pan paniscus</i>) WITH SUSPECTED DILATED CARDIOMYOPATHY UNDER ECHOCARDIOGRAPHIC CONTROL AT WILHELMA, STUTTGART, GERMANY, A SINGLE CENTER EXPERIENCE (p. 31)
14:50	Niphuis H	REVERSE ZOOLOGIC HUMAN HERPES VIRUS 1 INFECTION IN TWO YOUNG PERUVIAN BLACK SPIDER MONKEYS (<i>Ateles chamek</i>) AT THE TARICAYA RESCUE CENTER, PUERTO MALDONADO, PERU (p. 32)
15:00	Persky M	ANTEMORTEM DIAGNOSIS AND SUCCESSFUL TREATMENT OF A COMPLETE MOLAR PREGNANCY IN A GERIATRIC BONOBO (<i>Pan paniscus</i>) (p. 34)
15:10	Schuele A	FIRST DETECTION OF CHOLESTASIS AND TREATMENT WITH AN ENDOSCOPIC RETROGRADE CHOLANGIOPANCREATOGRAPHY IN A SUMATRAN ORANGUTAN (<i>Pongo pygmaeus abelii</i>). (p. 36)
15:20		Tea break
Session chairs	Sanderson S	Nagoya Protocol
15:50	Muir A	THE NAGOYA PROTOCOL: IMPLICATIONS FOR ZOO AND WILDLIFE VETS (p. 38)
Session chairs	Sos E Padilla L	AZA/EAZA Vet Advisors I
16:00	D'Agostino J	AVIAN BORNAVIRUS IN THE KEA (<i>Nestor notabilis</i>) SSP POPULATION (p. 39)
16:15	Jourdan B	MORBIDITY AND MORTALITY OF TAKIN (<i>Budorcas taxicolor</i>) POPULATIONS IN NORTH AMERICAN ZOOLOGICAL INSTITUTIONS FROM 1997 TO 2017 (p. 40)
16:30	Segura-Cortijos C	MORTALITY AND MORBIDITY IN CAPTIVE LIVINGSTONE'S FRUIT BATS (<i>Pteropus livingstonii</i>) (p. 41)
16:45	Ordonneau D	PRIMARY CAUSES OF MORBIDITY AND MORTALITY IN WILD VERSUS CAPTIVE LOWLAND TAPIRS (<i>Tapirus terrestris</i>) - A MODEL COMPARISON FOR OTHER TAPIR SPECIES (p. 44)
17:00	Ashpole I	RETROSPECTIVE ANALYSIS INTO THE CAUSES OF MORBIDITY AND MORTALITY IN MOUNTAIN CHICKEN FROGS (<i>Leptodactylus fallax</i>) HELD AT FOUR UK ZOOLOGICAL COLLECTIONS FROM 1999-2018 (p. 46)
17:15	Singleton C, Mulot B	RETROSPECTIVE REVIEW OF MORTALITY IN QUEENSLAND KOALA (<i>Phascolarctos cinereus</i>) IN ZOOLOGICAL FACILITIES IN NORTH AMERICA (1976-2016) AND EUROPE (1987-2017) (p. 47)
17:30 - 19:30		<p>COMMITTEE AND WORKING GROUP MEETINGS:</p> <p>AAZV Law Committee (17:30 – 18:30, Rais Hall) AAZV Development and PR (18:30 – 19:30, Rais Hall) AAZV international Committee (17:30 – 18:30, Mayakovsky Balcony 1) AAZV infectious diseases (18:30 – 19:30, Mayakovsky Balcony 2)</p> <p>EAZWV Student board (17:30 – 19:00, Mayakovsky Hall) EAZWV Ethics and Welfare (17:30 – 18:30, Meeting Room 14) EAZA Vet Committee (17:30 – 18:30, Meeting Room 10) EAZWV/EAZA legislation group (18:30 – 19:30, Meeting Room 10) EAZWV/EAZA data and resource sharing (17:30 – 18:30, Meeting Room 15) EAZWV/EAZA infectious diseases (17:30 – 18:30, Mayakovsky Balcony 2)</p>

9 th October		Tuesday
07:30 - 17:30		Registration (Foyer 1 st Floor)
Session chairs	Zachariah T Hatt J-M	Avian I
08:00	Garner MM	PLENARY TALK: EMERGING AND LESS RECOGNIZED DISEASES OF ZOO BIRDS (p. 48)
09:00	Harrison T	TWENTY-EIGHT YEARS OF AVIAN CANCER LITERATURE: WHAT'S COMMON AND WHAT'S HELPED (p. 49)
09:15	McLelland D	MORTALITY EVENT IN CRITICALLY ENDANGERED ORANGE-BELLIED PARROTS (<i>Neophema chrysogaster</i>) AT ADELAIDE ZOO, AND DETECTION OF PSITTACID ADENOVIRUS 2 IN THE CAPTIVE POPULATION (p. 50)
09:30	Shopland S	CAUSES OF MORTALITY IN PINK PIGEONS (<i>Nesoenas mayeri</i>) HOUSED IN EUROPEAN COLLECTIONS: 1979-2018 (p. 51)
09:45	Troan BV	LYMPHOSARCOMA IN CAPTIVE BLUE-CROWNED PARROTS (<i>Loriculus galgulus</i>) (p. 52)
10:00	Witte C	WHAT CAN BIG DATA AND A SOCIAL NETWORK ANALYSIS TELL US ABOUT AVIAN MYCOBACTERIOSIS AND DISEASE TRANSMISSION? (p. 53)
Session chairs	Carpenter N Chenet B	Avian II: case reports
10:15	Garcés Torres RS	UNILATERAL PHACOEMULSIFICATION OF A MATURE CATARACT IN A CHILEAN FLAMINGO (<i>Phoenicopterus chilensis</i>) (p. 55)
10:25	Loucachevsky T	USE OF AN ELASTIC TRANSARTICULAR EXTERNAL CONSTRUCT FOR SURGICAL TREATMENT OF AN INTERTARSAL JOINT LUXATION ON A HARRIS'S HAWK (<i>Parabuteo unicinctus</i>) (p. 57)
10:35		Coffee break
Session chairs	Mylniczenko N Sainmaa S	Aquatics and Marine Mammal
11:00	Cutler D	TISSUE ENZYME ACTIVITIES IN THE CREVALLE JACK (<i>Caranx hippos</i>) (p. 59)
11:15	Greenwood A	A NOVEL AND DIVERGENT ZOO POLAR BEAR (<i>Ursus maritimus</i>)-ASSOCIATED MASTADENOVIRUS (p. 60)
11:30	Meegan J	CURRENT STRATEGIES FOR DIAGNOSIS, TREATMENT, MANAGEMENT AND PREVENTION OF RENAL CALCULI IN BOTTLENOSE DOLPHINS (<i>Tursiops truncatus</i>) ... WHAT WE'VE LEARNED AND WHERE WE'RE HEADED (p. 61)
11:45	Mylniczenko N	ULTRASOUND COMPARISON OF THE LIVER TO SPLEEN AS AN EVALUATION OF LIVER AND BODY CONDITION IN ELASMOBRANCHS (p. 64)
12:00	Shapiro K	DISTRIBUTION AND VIRULENCE OF <i>Toxoplasma gondii</i> IN SOUTHERN SEA OTTERS (<i>Enhydra lutris nereis</i>) (p. 66)
12:15		Lunch
Session chairs	Allender M Drake G	Reptile and Amphibian I
13:15	Larouche CB	PHARMACODYNAMICS OF MIDAZOLAM AND REVERSAL WITH FLUMAZENIL IN THE BALL PYTHON (<i>Python regius</i>) (p. 68)
13:30	Frei S	EVALUATION OF A VENTRAL AND LEFT LATERAL COELIOSCOPY APPROACH IN BEARDED DRAGONS (<i>Pogona vitticeps</i>) (p. 69)
13:45	Kubiski S	SPINAL OSTEOARTHROPATHY IN MULTIPLE SNAKE SPECIES AT SAN DIEGO ZOO (p. 71)
14:00	Marschang R	OPTIMIZING THE DETECTION OF FERLAVIRUSES (p. 72)
14:15	Paré JA	A REVIEW OF THE NOVEL REPTILE FUNGAL PATHOGENS FOR THE ZOO PRACTITIONER (p. 73)
14:30	Steeil JC	RETROSPECTIVE REVIEW OF SNAKE FUNGAL DISEASE (<i>Ophidiomyces ophiodiicola</i>) AT THE SMITHSONIAN'S NATIONAL ZOOLOGICAL PARK (1983-2017) (p. 76)

9 th October		Tuesday
Session chairs	Carpenter N Chenet B	Reptile and Amphibian II: case reports
14:45	Christman JE	DIAGNOSIS, MOLECULAR CHARACTERIZATION AND MANAGEMENT OF PNEUMONIA CAUSED BY A NOVEL <i>Nannizziopsis</i> spp. IN A CAPTIVE GALAPAGOS TORTOISE (<i>Chelonoidis nigra</i>) (p. 77)
Session chairs	Sos E Padilla L	AZA/EAZA Vet Advisors II - Elephant
15:00	Howard L	UPDATE ON ELEPHANT ENDOTHELIO TROPIC HERPESVIRUS (EEHV) IN ASIAN ELEPHANT RANGE COUNTRIES: A REPORT FROM THE 3 RD EEHV IN ASIA WORKING GROUP MEETING (p. 79)
15:15	Jesus Fontes S	ELEPHANT ENDOTHELIO TROPIC HERPESVIRUS HEMORRHAGIC DISEASE - THE IMPACT ON THE EUROPEAN CAPTIVE POPULATION OF ASIAN ELEPHANT (<i>Elephas maximus</i>) (p. 81)
15:30		Tea break
Session chairs	Pye G Greenwood A	Wildlife and Conservation
16:00	Calle P	RISK MITIGATION STRATEGIES AND HEALTH MANAGEMENT IN REPTILE REINTRODUCTION PROGRAMS (p. 83)
16:15	Dutton C	AN EPIZOOTIC OF MYCOTIC SHELL DISEASE ASSOCIATED WITH NANNIZIOPSISACEAE FUNGAL INFECTION IN JUVENILE WOOD TURTLES (<i>Glyptemys insculpta</i>) IN A CONSERVATION HEAD-STARTING PROGRAM (p. 86)
16:30	Lamberski N	COMMUNITY-DRIVEN CONSERVATION IS SAVING ELEPHANTS (<i>Loxodonta africana</i>) IN NORTHERN KENYA (p. 87)
16:45	Miller M	<i>Mycobacterium tuberculosis</i> IN FREE-RANGING ELEPHANTS – EMERGING ZOOANTHROPOGENIC DISEASE? (p. 88)
17:00	Grilo M	WILDLIFE SENTINELS: ARE FECAL ENTEROCOCCI FROM OTTERS SUITABLE INDICATORS OF ANTIMICROBIAL RESISTANCE DISSEMINATION IN AQUATIC ENVIRONMENTS? (p. 90)
17:15	Perera V	POPULATION THRESHOLD AND EMERGING PARASITIC DISEASES OF ELEPHANTS IN SRI LANKA (p. 92)
17:30 - 18:30		COMMITTEE AND WORKING GROUP MEETINGS: AAZV members services / EAZWV conference + finance & sponsorship (17:30 – 18:30 Mayakovsky Hall) JZWM editorial board (17:30 – 19:00, Meeting Room 15) EAZWV Communications working group (17:30 – 18:30, Meeting Room 14) EAZWV Education & Training (17:30 – 18:30, Mayakovsky Balcony 1) EAZWV Sustainability working group (17:30 – 18:30, Mayakovsky Balcony 2)
18:30 - 20:30		POSTER AND PASTA PARTY (Conference venue)

10th October		Wednesday
06:30 - 08:30		ECZM exam preparation course (Meeting Room 14)
08:00 - 13:00		Registration (Foyer 1 st Floor)
Session chairs		Small Mammal
08:30	Jekl V	PLENARY TALK: RODENTS, LAGOMORPHS AND OTHER SMALL MAMMALS IN ZOO COLLECTIONS (p. 95)
Session chairs	Sos E Padilla L	AZA/EAZA Vet Advisors III
09:30	Rideout BA	TOOLS FOR RESEARCH STUDY DESIGN AND DATA MANAGEMENT (p. 96)
09:45	Murphy H	CARDIAC DISEASE AND ADIPOSITY ARE LINKED IN MALE GORILLAS (<i>Gorilla gorilla gorilla</i>) (p. 97)
10:00	Chenet B	CHOLELITHIASIS IN CALLITHRICHIDS IN EUROPEAN ZOOS (p. 98)
10:15	Lung N Pratamiutami A	COLLABORATION ACROSS INSTITUTIONS AND ACROSS CONTINENTS FACILITATES ADVANCEMENTS IN THE DIAGNOSIS AND MANAGEMENT OF CHRONIC RESPIRATORY DISEASE OF ORANGUTANS (<i>Pongo</i> spp.) (p. 100)
10:30		Coffee break
Session chairs	Carpenter N Chenet B	Mammal case reports
11:00	Nielsen A	CORRECTION OF FLEXOR AND ANGULAR FRONT LIMB DEFORMITIES IN A JUVENILE GIRAFFE WITH TENDINITIS (<i>Giraffa camelopardalis</i>) (p. 103)
11:10	Siegal-Willott J	USE OF SERUM INFLAMMATORY MARKERS TO ASSESS OSTEOARTHRITIS IN AN ASIAN ELEPHANT (<i>Elephas maximus</i>) (p. 104)
11:20	van Zijll Langhout M	A COMPLETE VERTICAL HOOF CRACK IN A GIRAFFE (<i>Giraffa camelopardalis reticulata</i>) AND ITS TREATMENT (p. 106)
11:30	Wenker C	DON'T SQUEEZE IT! TRANSABDOMINAL ULTRASOUND FOR PREGNANCY MONITORING OF A TRAINED PYGMY HIPPOPOTAMUS (<i>Choeropsis liberiensis</i>) (p. 107)
Session chairs	Hanley C Balfanz F	Diagnostics and Therapeutics
11:40	Bentley C	DETECTION OF FOOT PATHOLOGY BY 3D RADIOGRAPHY IN ELEPHANTS (p. 109)
11:55	Donnelly K	BLEOMYCIN IS A SAFE DRUG FOR FOCAL ELECTROCHEMOTHERAPEUTIC TREATMENT OF FIBROPAPILLOMAS IN GREEN TURTLES (<i>Chelonia mydas</i>) (p. 110)
12:10	Flanders JA	USE OF THROMBOELASTOGRAPHY IN THE CLINICAL MANAGEMENT OF EEHV1 INFECTION IN A YOUNG FEMALE ASIAN ELEPHANT (<i>Elephas maximus</i>) (p. 112)
12:25	Perrin KL	HOW INSENSITIVE ARE POPULATION-BASED REFERENCE INTERVALS FOR MONITORING HEMATOLOGIC CHANGES IN ASIAN ELEPHANTS (<i>Elephas maximus</i>)? (p. 113)
12:40	Schiffmann C	BODY CONDITION SCORES IN EUROPEAN ZOO ELEPHANTS (<i>Elephas maximus</i> and <i>Loxodonta africana</i>) – STATUS QUO, DEVELOPMENT OVER TIME AND INFLUENCING FACTORS (p. 114)
12:55	Pohlin F	EFFECTS OF CAPTURE AND TRANSPORT ON CLINICAL CHEMISTRY ANALYTES IN WHITE RHINOCEROSES (<i>Ceratotherium simum</i>) TRANSLOCATED FOR OVER 30 HOURS (p. 115)
13:10		Lunch
13:45 - 21:00		ZOO VISIT incl. ZOO DINNER Prague Zoo, U Trojského zámku 120/3, 171 00 Praha 7 Bus shuttle from Nádraží Holešovice to Prague Zoo 13:45 - 15:20 and back 18:50 – 21:30

11th October		Thursday
08:00 - 17:30		Registration (Foyer 1 st Floor)
Session chairs	Delk K Vodička R	Natural Disaster Management
08:30	Nadler Y Vodicka R	PLENARY TALK: LESSONS LEARNED: FIVE PILLARS OF EMERGENCY MANAGEMENT (p. 117)
09:30	Hoby S	MANAGEMENT OF REPEATED FLOODWATERS AND WINTER STORMS IN A SWISS ANIMAL PARK (p. 118)
09:45	Marrow JC	NATURAL DISASTER RESPONSE: HURRICANE HARVEY AND THE HOUSTON ZOO (p. 120)
10:00	Myers GE	HURRICANE PREPARATIONS AND AFTERMATH AT ZOO MIAMI (p. 121)
10:15		Coffee break
10:15 – 12:00		AAZV business meeting (all AAZV members, Social Hall)
10:45 – 12:15		EAZWV general assembly (all EAZWV members, Mayakovsky Hall)
12:15		Lunch
Session chairs	Neiffer D Hammer-Jensen T	Anaesthesia
13:15	Gaudio E	ETORPHINE-AZAPERONE-MEDETOMIDINE IMMOBILIZATION IN FREE-RANGING PLAINS ZEBRAS (<i>Equus quagga</i>) (p. 122)
13:30	Greunz EM	INTRACARDIAC SHUNTING AFFECTS MINIMAL ALVEOLAR CONCENTRATION OF ISOFLURANE IN THE RED-FOOTED TORTOISE (<i>Chelonoidis carbonaria</i>) (p. 123)
13:45	Patterson M	A NOVEL FORMULATION OF ALFAXALONE INCREASES THE UTILITY FOR REMOTE DELIVERY IN BIGHORN SHEEP (<i>Ovis canadensis</i>) (p. 125)
14:00	Romano J	SEDATIVE, CARDIORESPIRATORY AND THERMOREGULATORY EFFECTS OF ALFAXALONE ON BUDGERIGARS (<i>Melopsittacus undulatus</i>) (p. 127)
14:15	Sheldon JD	EFFECTS OF OXYGEN AND ISOFLURANE ANESTHESIA ON HEMOLYMPH GAS ANALYSIS AND RIGHTING REFLEX OF ASIAN FOREST (<i>Heterometrus longimanus</i>) AND DICTATOR SCORPIONS (<i>Pandinus dictator</i>) (p. 129)
14:30 - 15:30		ROUND TABLES: Animal welfare & wellness (Paul Murphy J, Feltrer Y, Strike T) Elephant herpes virus update (Howard L) ZIMS for vets (Mulot B, Thompson R) Conservation by Zoo Vets (Walzer C)
15:30		Tea break
Session chairs	D'Agostino J Göritz F	Reproduction
16:00	Balfanz F	OVULATION INDUCTION IN ANOESTRUS GREATER ONE-HORNED RHINOCEROS (<i>Rhinoceros bicornis</i>) (p. 131)
16:15	Callealta-Rodriguez I	USING POSITIVE REINFORCEMENT CONDITIONING TO COLLECT SAMPLES FROM UNANAESTHETIZED LIONS (<i>Panthera leo</i>) FOR REPRODUCTIVE STUDIES (p. 132)
16:30	Flacke GL	EVALUATING ADRENOCORTICAL ACTIVITY AND CHARACTERIZING THE REPRODUCTIVE BIOLOGY OF THE PYGMY HIPPOPOTAMUS (<i>Choeropsis liberiensis</i>) THROUGH NON-INVASIVE ENDOCRINE MONITORING (p. 134)
16:45	Hildebrandt TB	ENRICHING THE GENETIC POOL AND MANAGING THE SEX RATIO OF CAPTIVE ELEPHANT POPULATIONS THROUGH ARTIFICIAL INSEMINATION WITH FROZEN-THAWED SEMEN COLLECTED IN THE WILD (p. 136)
17:00	Holtze S	A FIRST STEP TOWARDS ASSISTED REPRODUCTIVE TECHNOLOGIES IN BATS: SPERM CRYOPRESERVATION (p. 138)
17:15	Lambo CA	SERUM ANTI-MÜLLERIAN HORMONE CONCENTRATION DURING CONTROLLED OVARIAN STIMULATION IN FELIDS FOR IMPROVED MONITORING OF REPRODUCTIVE POTENTIAL (p. 139)
17:30 - 19:00		STUDENT MENTOR MIXER (Rais and Social Hall)
19:30 - 22:30		FESTIVE EVENING - MEDIEVAL NIGHT IN OLD PRAGUE Krčma U Pavouka, Celetná 597/17, 110 00 Praha 1 - Staré Město

12th October		Friday
08:00 - 12:00		Registration (Foyer 1 st Floor)
Session chairs	McCain S Wiegmann L	Felids
08:30	Cushing A	ECHOCARDIOGRAPHIC PARAMETERS IN ADULT TIGERS (<i>Panthera tigris</i>) DURING TWO PHASES OF AN ANESTHETIC PROTOCOL (p. 141)
08:45	Flaminio K	PHARMACOKINETICS OF A SINGLE DOSE OF CEFOVECIN IN AFRICAN LIONS (<i>Panthera leo</i>) FOLLOWING SUBCUTANEOUS ADMINISTRATION (p. 143)
09:00	Stalis I	VENO-OCCLUSIVE DISEASE IN CAPTIVE CHEETAHS (<i>Acinonyx jubatus</i>) REVISITED: A MULTI-DISCIPLINARY PERSPECTIVE AT THE SAN DIEGO ZOO SAFARI PARK (p. 145)
Session chairs	Sos E Padilla L	AZA/EAZA Vet Advisors IV
09:15	Garner MM	DISEASE TRENDS IN MANAGED POPULATIONS OF THE ENDANGERED BLACK-FOOTED FERRET (<i>Mustela nigripes</i>) (p. 147)
09:30	Hammond EE	MANED WOLF (<i>Chrysocyon brachyurus</i>) SPECIES SURVIVAL PLAN® MEDICAL UPDATE (p. 149)
09:45	Wack RF	DISCOVERY AND PRELIMINARY CHARACTERIZATION INCLUDING VIRAL SHEDDING PATTERNS OF A NEW AMDOPARVOVIRUS INFECTION IN A GROUP OF RED PANDAS (<i>Ailurus fulgens</i>) (p. 152)
10:00		Coffee break
Session chairs	Howard L Hermes R	Elephant and Rhino
10:30	Ts R	SUCCESSFUL MANAGEMENT OF GASTROINTESTINAL IMPACTION IN THREE ASIAN ELEPHANTS (<i>Elephas maximus</i>) IN CAPTIVITY BASED ON THE CLINICAL PROTOCOL FIXED FOR THE DISEASE (p. 153)
10:45	Bechert U	PHARMACOKINETICS OF FLUNIXIN MEGLUMINE IN ELEPHANTS (<i>Loxodonta africana</i> AND <i>Elephas maximus</i>) (p. 157)
11:00	Citino S	INVESTIGATION OF A Q FEVER OUTBREAK IN A BREEDING HERD OF WHITE RHINOCEROS (<i>Ceratotherium simum</i>) (p. 159)
11:15	Rose JB	MANAGEMENT OF TRAUMATIC TUSK FRACTURES IN AFRICAN ELEPHANTS (<i>Loxodonta africana</i>): A 22-YEAR RETROSPECTIVE REVIEW AT A NORTH AMERICAN ZOOLOGICAL FACILITY (p. 160)
11:30	Kishbaugh J	EVALUATION OF PLATELET TRANSPORT IN ASIAN ELEPHANTS (<i>Elephas maximus</i>) AS PART OF AN ONGOING STUDY TARGETING NOVEL EEHV-HD TREATMENT (p. 161)
11:45	Ruetten M	CAN IRON STORAGE DISEASE BE INDUCED BY A CHRONIC INFECTION SUCH AS TUBERCULOSIS IN ASIAN ELEPHANTS (<i>Elephas maximus</i>)? (p. 163)
12:00	Wissink-Argilaga N	EARLY EEHV-1B DETECTION AND SUCCESSFUL TREATMENT OF EEHV-HD IN AN ASIAN ELEPHANT CALF (<i>Elephas maximus</i>) (p. 164)
12:15		CLOSING CEREMONY
13:15		Lunch packages
13:15 - 20:00		Free time to explore Prague or watch an Albatross documentary (Meeting Room 10)
13:30 – 15:00		Kolmarden conference meeting (Meeting Room 14) Zebra foundation meeting (Meeting Room 15)
20:00 - 24:00		CONFERENCE BANQUET (Conference venue)

POSTERS

LABORATORY INDICATORS OF DISEASE IN WHITE-BELLIED TREE PANGOLIN (*Phataginus tricuspis*)

Copper Aitken-Palmer, Matthew C. Allender, Carolyn Cray, Sara Sokolik and Michael J. Adkesson 165

SURVEILLANCE FOR *PARALAPHOSTRONGYLUS ANDERSONI* IN FLORIDA GASTROPODS USING A NOVEL PROBE HYBRIDIZATION QUANTITATIVE POLYMERASE CHAIN REACTION ASSAY

Hillary E. Allgood, Linda Archer, Heather S. Walden and James F. X. Wellehan Jr. 166

SEMEN COLLECTION THROUGH URETHRAL CATHETERIZATION IN THE LYNX (*Lynx lynx*) SPECIES: PRELIMINARY RESULTS

Alice Andolfatto, Maria Carmela Pisu, Giuliano Ravasio, William Magnone, Angelica Ferro, Marina Tripoli and Monica Probo 168

IMPACT OF DIETARY FRUCTOSE ON THE LIPID PROFILE IN SIX MACAWS – A PILOT STUDY

Karine Béland, Marion Desmarchelier, Shannon T. Ferrell and Hugues Beaufrère 170

XENOTRANSFUSION MANAGEMENT IN AN ARCTIC FOX (*Vulpes lagopus*) DIAGNOSED WITH AN IMMUNE-MEDIATED HEMOLYTIC ANEMIA

Karine Béland, Claire Vergneau-Grosset, Stéphane Lair and Marie-Claude Blais 172

PENILE RECONSTRUCTION USING PEDICLED SUPRAPUBIC FLAP IN AN EMPEROR TAMARIN (*Saguinus imperator*)

Mélanie Berthet, Sandra Avril, Alexandrine Vesz and Benoit Quintard 174

A CASE REPORT OF A JAGUAR (*Panthera onca*) WITH ANEMIA THAT WAS MANAGED USING MULTIPLE BLOOD TRANSFUSIONS

Emily Blatt and Alexis Moreno 176

OVERVIEW OF ATHEROSCLEROSIS OCCURRENCE IN RAPTORS: A 12-YEAR RETROSPECTIVE SURVEY AT ZOO PARC DE BEAUVAL

Cindy Braud, Nicolas Goddard, Océane Graillot, Antoine Leclerc and Baptiste Mulo 177

CONGENITAL HEART DISEASE AND SECONDARY ERYTHROCYTOSIS IN A CAPYBARA (*Hydrochaeris hydrochaeris*)

Lucie Brisson, Krystal Vail, Angela Arenas and Christine Molter 179

IRON STORAGE DISEASE IN BLACK RHINO (*Diceros bicornis*) - MONITORING AND TREATMENT PROGRAM

Gerda R Bruins-van Sonsbeek 180

FIRST ASSAY OF PARASYMPATHETIC TONE ACTIVITY (PTA) MONITORING ON ZOO ANIMAL SPECIES <i>Alice Brunet, Anaïs Cœur, Stéphane Junot and Katia Ortiz</i>	182
INTRAOcular PRESSURE AS MEASURED BY REBOUND TONOMETRY AND REVIEW OF OCULAR LESIONS IN HOUSTON TOADS (<i>Anaxyrus houstonensis</i>) <i>Christine T. Bui, Christine M. Molter, Maryanne E. Tocidowski, Nicholas Millichamp and Philip H. Kass</i>	184
SCREENING OF POTENTIAL PROBIOTIC LACTIC ACID BACTERIA IN <i>Iguana iguana</i> <i>Yi-Ru Chen, Chen-Ta Tsai and Kwong Chung Tung</i>	186
INVESTIGATION OF POPULATION-LEVEL EFFECTS OF COPPER DEFICIENCY ON HEALTH AND REPRODUCTIVE SUCCESS OF HOOFSTOCK POPULATIONS AT THE SAN DIEGO ZOO SAFARI PARK <i>Meredith M. Clancy, Lauren Howard and Nadine Lamberski</i>	187
SHARING THE ROAD: THE COLLABORATIVE APPROACH TO ANIMAL WELFARE <i>Hollie Colahan, Anneke Moresco, Sharon Joseph and Marty MacPhee</i>	188
CRYPTOCOCCOSIS IN A FAMILY GROUP OF GOELDI'S MONKEYS (<i>Callimico goeldii</i>) <i>Émilie L. Couture, Simon Lévesque, Philippe Dufresne, Stéphane Lair and Shannon Ferrell</i>	189
IBEX-ASSOCIATED MALIGNANT CATARRHAL FEVER IN EXOTIC HOOFSTOCK <i>Jordan Davis-Powell, Lisa Naples, Cristina W. Cunha, Hong Li, Patricia A. Pesavento, Cynthia K. Stadler, Brandon A. Boren, Francisco A. Uzal, Francisco Carvalho Chaigneau and Janet Moore</i>	190
CONTRACEPTION SUCCESS IN A LARGE COLONY OF RODRIGUES FRUIT BATS (<i>Pteropus rodricensis</i>) USING ETONOGESTREL (NEXPLANON®) IMPLANTS <i>Gabby J. Drake, Ian Ashpole, David White, James Andrewes, Veronica B. Cowl and Yedra Feltrer Rambaud</i>	193
COELOMIC FLUID ANALYSIS IN CLINICALLY NORMAL AND ABNORMAL ELASMOBRANCHS <i>Kyle Donnelly, Nicole Stacy, Tristan Guttridge and Natalie Mylniczenko</i>	194
GERIATRIC ANIMAL CARE PROGRAM IN WILDLIFE RESERVES SINGAPORE <i>Guillaume Douay, Abraham Mathew, Shangzhe Xie, Yaopraba Mathura, Ali A. Ahmad, Claudia Tay, Francis Cabana and Sonja Luz</i>	196

COMPARISON OF THREE ANESTHESIA PROTOCOLS FOR FOOD-PRODUCING WILD BOARS

(*Sus scrofa*)

Joy Einwaller, Johanna Painer, Sebastian Vetter, Carsten Grøndahl, Ulrike Auer,
Eva Eberspächer-Schweda, Eva M. Greunz, Claudia Bieber and Gabrielle L. Stalder ..198

LYSOSOMAL STORAGE DISEASE IN THREE NÉNÉ GEESE (*Branta sandvicensis*)

Jessica Eisenbarth, Pankaj Kumar, Giselle Cino and Chanran K Ganta200

ANIMAL WELFARE EVALUATION OF WILD BOAR (*Sus scrofa*) TRAPPING

Åsa Fahlman, Johan Lindsjö, Therese Arvén Norling, Odd Höglund, Petter Kjellander,
Erik O. Ågren, Mats Stridsberg and Ulrika A. Bergvall201

POST-MORTEM FINDINGS IN FREE- RANGING EUROPEAN BROWN HARES (*Lepus europaeus*)
FROM SCHLESWIG-HOLSTEIN, GERMANY

Marcus Fährndrich, Marco Roller, Stephanie Gross, Vanessa M. Pfankuche,
Peter Wohlsein, Jutta Verspohl, Christina Strube, Patricia König, Herbert Tomaso,
Ulrich Fehlberg and Ursula Siebert202

SURGICAL TREATMENT OF OLD HUMERAL FRCATURE IN THE EASTERN IMPERIAL EAGLE
(*Aquila heliaca*) REHABILITATION AND RELASING: THE FIRST NATIONAL CLINICAL REPORT

Hamidreza Fattahian, Hadi Sharifi Nistanak, Hamid Mohyeddin, Roozbeh Moridpour,
Soudeh Ansari and Sepideh Sadafi Koochehbaghi203

PHARMACOKINETICS AND UTILIZATION OF ALPHA LIPOIC ACID; A PROPOSED THERAPEUTIC
AID FOR CALIFORNIA SEA LIONS (*Zalophus californianus*) WITH DOMOIC ACID TOXICOSIS

Cara L. Field, Sophie Whoriskey, Xianguo Zhao, Frances M.D. Gulland and
Shawn P. Johnson205

OCULAR FINDINGS AND OPHTHALMIC VALUES IN A FLOCK OF CAPTIVE CHILEAN
FLAMINGOS (*Phoenicopterus chilensis*)

Rodrigo S. Garcés Torres, Cassandra D. Bliss and Benjamin E. Alcántar Hernández ...206

FECAL CORTICOSTERONE CONCENTRATIONS DURING MULTIPLE SOCIAL PAIRINGS OF
ORANGE-WINGED AMAZON PARROTS (*Amazona amazonica*)

Lindsey Garcia, Jamie M. Douglas, Liz Stelow, Irina Udaltsova,
David Sanchez-Migallon Guzman and Joanne Paul-Murphy208

SEMEN COLLECTION, EVALUATION AND FREEZING IN THE BONOBO (*Pan paniscus*)

Ilse Gerits, Eline Wydooghe, Francis Vercammen, Jeroen M.G. Stevens and
Cyriel Ververs209

RETROSPECTIVE ANALYSIS OF YELLOW-BREADED CAPUCHIN MONKEYS (*Sapajus
xanthosternos*) MEDICAL CONDITIONS AND PATHOLOGY

Marine Giorgiadis and Benoit Quintard210

DO WE HAVE TO BE AFRAID OF BACTERIA FROM INVASIVE AND ALIEN TURTLES? <i>Olga Goławska, Marta Wiśniecka, Bartłomiej Gorzkowski, Magdalena Zajqc, Diana Soleniec, Aleksandra Śmiałowska and Dariusz Wasyl</i>	211
COMPUTED TOMOGRAPHY AS DIAGNOSTIC TOOL FOR EVIDENCE BASED EUTHANASIA IN CAPTIVE URSIDS <i>Marc Goelkel, Thomas B. Hildebrandt, Guido Fritsch, Claudia A. Szentiks, Gudrun Wibbelt, Johanna Painer, Julia Bohner, Irene Redtenbacher, Susanne Holtze and Frank Goeritz</i>	214
PREVALENCE OF KERATOPATHY IN TWO GROUPS OF DOLPHINS (<i>Tursiops truncatus</i>) <i>Elisa M González-Alonso-Alegre, Eva Martínez-Nevado and Alfonso Rodríguez-Alvaro</i>	215
HEALTH MATTERS – IMPROVING CONSERVATION PLANS OF IBEROCHONDROSTOMA LUSITANICUM BY INCLUDING A BIOSURVEILLANCE COMPONENT <i>Miguel L. Grilo, Carla Sousa-Santos, Luís Tavares, Joana Robalo and Manuela Oliveira</i>	216
ANTIMICROBIAL RESISTANT <i>Escherichia coli</i> IN MARINE ANIMALS IN THE GERMAN NORTH AND BALTIC SEA: PRELIMINARY RESULTS. <i>Stephanie Gross, Ruth Mengden, Corinna Kehrenberg, Manuela Oliveira and Ursula Siebert</i>	217
QUALITY OF ANESTHESIA INDUCED BY THIAFENTANIL COMBINATIONS IN ZOO-MANAGED AND FREE-RANGING <i>Equus caballus przewalski</i> <i>Jacob Herr, Jim Rasmussen, Roman Vodicka, Rachel Thompson and Tiffany Wolf</i>	219
RADIOLOGIC MEASUREMENT AND DETERMINATION OF KIDNEY-TO-VERTEBRA RATIOS AS A METHOD OF ESTIMATING RENAL SIZE IN SERVALS (<i>Leptailurus serval</i>) <i>Adrien-Maxence Hespel, Julianne Leon and Abigail Duval</i>	220
OUTBREAK OF DISEASE CAUSED BY <i>Escherichia albertii</i> IN BIRDS AT AN AUSTRALIAN ZOO <i>Frances Hulst, Paul Thompson, Esther E. Crouch, Lydia Tong, David M. Gordon, Larry Vogelnest, Kimberly Vinette Herrin, Gabrielle Tobias and Karrie Rose</i>	221
HAEMATOLOGY, URINALYSIS AND PATHOMORPHOLOGICAL FINDINGS IN INDIAN LEOPARDS (<i>Panthera pardus</i>) WITH GLOMERULONEPHRITIS <i>Kafil Hussain, Shafiqur Rehman, J. S. Soodan, M. M. S. Zama and S. K. Gupta</i>	222

DIVERGENT BORNAVIRUSES FROM AUSTRALIAN CARPET PYTHONS WITH NEUROLOGICAL DISEASE DATE THE ORIGIN OF EXTANT *BORNAVIRIDAE* PRIOR TO THE END-CRETACEOUS EXTINCTION

Timothy H. Hyndman, Catherine M. Shilton, Mark D. Stenglein and James F.X. Wellehan Jr.223

CARDIOVASCULAR EFFECTS OF ALFAXALONE IN THE BALL PYTHON (*Python regius*) AND SOUTH AMERICAN RATTLESNAKE (*Crotalus durissus*)

Lauren E. James, Catherine J.A. Williams Tobias Wang and Mads F. Bertelsen225

DESCRIPTION OF PERI-ANESTHETIC COMPLICATIONS IN DOMESTIC RABBITS (*Oryctolagus cuniculus*) UNDERGOING ANESTHESIA AT A VETERINARY TEACHING HOSPITAL (2005 TO 2017)

Kelsey Jung, Sangeeta Rao and Matthew Johnston226

CREATING A RESPONSIVE ANIMAL WELFARE COMMITTEE: A STEP BY STEP APPROACH

Dominique L. Keller, Hendrik Nollens and Jeff Andrews227

DIAGNOSIS AND TREATMENT OF PSYCHOPATHOLOGICAL CONDITIONS IN CAPTIVE NON-HUMAN PRIMATES: A CALL FOR AN INTERDISCIPLINARY APPROACH

Maya S. Kummrow228

CONJUNCTIVAL SQUAMOUS CELL CARCINOMA ASSOCIATED WITH SOLAR ELASTOSIS IN A WHITE RHINOCEROS (*Ceratotherium simum*)

James Kusmierczyk, Erin M. Scott, Brooke C. Griff, J. Jill Heatley, Leandro B.C. Teixeira and Megan Climans229

A 52 YEAR GLOBAL RETROSPECTIVE ANALYSIS OF PATHOLOGICAL FINDINGS IN ZOO MANAGED GOELDI'S MONKEYS (*Callimico goeldii*) – (1965-2017)

Jennifer N. Langan, Mark R. Warneke, Matthew C. Allender and Michael J. Kinsel231

CUTANEOUS LYMPHOMA IN A SPANGLED EBONY LANGUR (*Trachypithecus auratus auratus*) AND ATTEMPTED TREATMENT WITH MASITINIB

Antoine Leclerc, Karin Lemberger, Didier Pin, Nicolas Goddard, Amélie Nicolau, Alice Brunet, Océane Graillot and Baptiste Mulot232

REPAIR OF A TIBIOTARSUS MALUNION BY CORRECTIVE OSTEOTOMY IN A STEPPE EAGLE (*Aquila nipalensis*)

Marko Legler, Vanessa Guddorf, Anja Hennig, Sabrina Wittrock and Michael Fehr....234

Reference intervals for plasma capillary zone electrophoresis in Hermann's tortoises (*Testudo hermanni*) depending on season and sex

Christoph Leineweber, Anke C. Stöhr, Sabine Öfner, Karina Mathes and Rachel E. Marschang235

IMMUNE MEDIATED SKIN DISEASES IN ZOO ANIMALS: THINKING OUTSIDE THE DIAGNOSTIC BOX. <i>Karin Lemberger, Baptiste Chenet and Didier Pin</i>	236
DETECTION AND IDENTIFICATION OF MYCOBACTERIA IN ALIEN (INCLUDING INVASIVE) TURTLE SPECIES IN POLAND <i>Marek Lipiec, Lukas Radulski and Monika Krajewska</i>	237
ADENOVIRUSES IN TORTOISES AND TURTLES IN EUROPE <i>Rachel E. Marschang, Ekaterina Kolesnik and Elisabeth Müller</i>	239
EFFECT OF Ultra-rapid cryopreservation ON sperm head morphometry OF WILD SPECIES <i>Eva Martínez-Nevado, Emma O'Brien, Milagros C. Esteso, Adolfo Toledano-Díaz, Cristina Castaño, Paula Bóveda, Juncal García García, Rafael Guerra, Manuel López Fernández, Javier Pérez Sanz, Antonio López-Sebastián and Julián Santiago-Moreno</i>	240
CLINICAL PRESENTATION, TREATMENT AND OUTCOME OF RHODODENDRON (GRAYANOTOXIN) INTOXICATION IN THREE MEDITERRANEAN TORTOISES <i>Karina Mathes and Michael Fehr</i>	242
RISK FACTORS AND MANAGEMENT OF HYPERKALEMIA IN TIGERS (<i>Panthera tigris</i>) AND LIONS (<i>Panthera leo</i>) ANESTHETIZED WITH ALPHA-2 AGONISTS <i>Michael S. McEntire, Andrew C. Cushing and Edward C. Ramsay</i>	243
DETECTION OF <i>Mycoplasma agassizii</i> AND SURVEILLANCE OF CAPTIVE EXOTIC CHELONID POPULATIONS IN AUSTRALIA <i>David J. McLelland and Timothy Hyndman</i>	244
NOVEL ASSAYS FOR DETECTION OF <i>MYCOBACTERIUM BOVIS</i> INFECTION IN FREE-RANGING AFRICAN RHINOCEROS (<i>Diceros bicornis</i> , <i>Ceratotherium simum</i>) AND IMPLICATIONS FOR CONSERVATION <i>Michele A. Miller, Peter E. Buss, Josephine Chileshe, Wynand Goosen, Eduard Roos, Paul van Helden and Sven D.C. Parsons</i>	245
A BONE OF CONTENTION: OS CORDIS OR PATHOLOGICAL FEATURE IN THE CHIMPANZEE (<i>Pan troglodytes</i>) HEART? <i>Sophie Moittié, Kerstin Baiker, Victoria Strong, Kate White, Mátyás Liptovszky, Sharon Redrobe, Aziza Alibhai, Craig Sturrock and Catrin Rutland</i>	247
GnRH VACCINE REACTION IN LARGE FLYING FOXES (<i>Pteropus vampyrus</i>) <i>Natalie D. Mylniczenko, Daniel V. Fredholm, Geoffrey W. Pye, Hani D. Freeman, Catharine J. Wheaton and Natalie Hall</i>	248

COLD PLASTINATION FOR PRESERVATION OF ZOOLOGICAL SPECIMENS FOR EDUCATION AND RESEARCH

Paul B. Nader, Ismael Concha and Robert W. Henry250

EFFECTS OF THE ADMINISTRATION OF A LONG-LASTING GnRH ANALOGUE IN THE MALE SCIMITAR-HORNED ORYX (*ORYX DAMMAH*).

Gabriela Negri, Silvana Mattiello, Rainer Schneider, Gianfranco Gabai, Eleonora Bonacina251

SEROPREVALENCE OF MALIGNANT CATARRHAL FEVER IN CAPTIVE WILDBEEST (*Connochaetes spp.*) IN FRANCE

Katia Ortiz, Justine Javaux, Barbara Blanc, Alice Brunet, Marie Simon, Thierry Petit, Sylvie Clavel, Benjamin Lamglait, Françoise Myser, Hong Li and Benjamin Dewals ...253

DETECTION OF INFECTIOUS AGENTS IN POPULARLY KEPT REPTILE SPECIES IN POLAND

Joanna Pasterny, Jakub Seń, Gabor Kamiński, Marta Marciniak, Kacper Stanicki, Łukasz Skomorucha and Rachel E. Marschang255

REARING OF ORPHAN ELEPHANT CALVES IN SRI LANKA FOR RELEASE INTO THE WILD: SURVIVAL AND CAUSE-SPECIFIC MORTALITY

B.V.P. Perera, M.K. Abeywardena, M.A. Pinidiya and Ayona Silva-Fletcher256

Lawsonia intracellularis: AN EMERGING DISEASE OF ZOO PRIMATES?

Benoît Quintard, Marine Giorgiadis, Brice Lefaux, Audrey Payebien, Christine Manson, Karin Lemberger and Céline François-Brazier257

HERPESVIRUS DETECTION IN FREE-LIVING PASSERINE BIRDS IN SLOVENIA

Jozko Racnik, Brigita Slavec, Tomi Trilar, Zoran Zlabravec, Uros Krapez and Olga Zorman Rojs259

FIRST REPORT OF TRYPANOSOMA EVANSI INFECTION (SURRA) IN A PUMA OF LAHORE ZOO, PAKISTAN

Imran Rashid and Haroon Akbar260

OCCURRENCE OF ZONOTIC PATHOGENS IN THE EUROPEAN HEDGEHOG (*Erinaceus europaeus*) IN AN URBAN SETTING

Maximilian Reuschel, Silke Braune, Thea Louise Prüfer, Andreas Moss, Rainer G. Ulrich, Michael Fehr and Martin Runge261

MALIGNANT BLASTOMA IN A JUVENILE EUROASIAN MAGPIE (*Pica pica*)

Maximilian Reuschel, Annika Lehmbecker and Marko Legler262

INHALATORY ISOFLURANE ANAESTHESIA IN MOUNTAIN CHICKEN FROGS (<i>Leptodactylus fallax</i>) <i>Alberto Rodriguez Barbon, Andrew Routh and Javier Lopez</i>	263
PARKINSONIAN-LIKE PRESENTATION OF NONSUPPURATIVE ENCEPHALITIS IN A JUVENILE WHITE-HANDED GIBBON (<i>Hylobates lar</i>) <i>Josephine B. Rose, Michelle R. Bowman, Melissa A. Fayette and Jeffry S. Proudfoot</i>	265
RETROSPECTIVE STUDY OF CAPTIVE EURASIAN LYNX (<i>Lynx lynx</i>) PATHOLOGY WITHIN EUROPEAN STUDBOOK INSTITUTIONS <i>Alexia Roux, Claude Guintard, Sen Lec, Jochen Lengger and Benoit Quintard</i>	266
STUDY OF SENSITIVITY TO WARFARIN, CHLOROPHACINONE AND BROMADIOLONE OF FOUR RAPTORS SPECIES <i>Anaïs Sailer, Philippe Berny and Virginie Lattard</i>	267
STUDY OF PERSONALITY IN BOTTLENOSE DOLPHINS (<i>Tursiops truncatus</i>) USING KEEPERS' RATINGS <i>Marina Salas, Eva Martínez-Nevado, Agustín López Goya, Jesús Fernández Morán and Xavier Manteca</i>	268
RETROSPECTIVE STUDY OF SURGICAL TREATMENT OF OSTEOMYELITIS AND INFECTIOUS ARTHRITIS IN THE FLIPPERS OF WILD SEALS IN THE NETHERLANDS <i>Anna Salazar-Casals, Ana Rubio-Garcia, Tijmen de Jong, James Collins, Joost Dorgelo, Pier Prins and Klaas Marck</i>	269
SEAL ENTANGLEMENTS: WHEN HUMAN-WILDLIFE CONFLICTS ARE CURED <i>Anna Salazar-Casals, Klaas van der Linde, Arnout de Vries, Sander van Dijk and Ana Rubio-Garcia</i>	270
INFECTION DISEASES IN THE EURASIAN BEAVER (<i>Castor fiber</i>) IN THE CZECH REPUBLIC WITH HIGH PREVALENCE OF ANTIBODIES TO <i>Neospora caninum</i> <i>Kamil Sedlák, Roman Vodička, Eva Bárťová and Aleš Vorel</i>	271
OBJECTIVE GAIT ANALYSIS IN NORMAL AND ABNORMAL HUMBOLDT PENGUINS (<i>Spheniscus humboldti</i>) USING A PRESSURE SENSITIVE WALKWAY <i>Julie D. Sheldon, Michael J. Adkesson, Matthew C. Allender, Julie A. Balko, Ryan S. Bailey, Jennifer N. Langan, Sathya K. Chinnadurai</i>	272
DIAGNOSTIC PERFORMANCE OF CLINICOPATHOLOGIC ANALYTES IN <i>OTOSTRONGYLUS CIRCUMLITIS</i> INFECTED REHABILITATING JUVENILE NORTHERN ELEPHANT SEALS (<i>Mirounga angustirostris</i>) <i>Julie D. Sheldon, Jorge A. Hernandez, Shawn P. Johnson, Sarrah Kaye and Nicole I. Stacy</i>	274

2018 NORTH AMERICAN POLAR BEAR (<i>Ursus maritimus</i>) SSP VETERINARY ADVISOR REPORT <i>Wynona Shellabarger and Erin Curry</i>	276
SUPPORTING POLAR BEAR (<i>Ursus maritimus</i>) CONSERVATION AND MANAGEMENT THROUGH ZOO RESEARCH <i>Wynona Shellabarger, Randi Meyerson and Megan Owen</i>	277
TWO CASES OF SUSPECTED METASTATIC PHEOCHROMOCYTOMA IN AFRICAN LION (<i>Panthera leo</i>) <i>Christine Steyrer</i>	279
SPECIATION OF UNKNOWN COCCIDIA IN HOUSE SPARROWS (<i>Passer domesticus</i>) SURROUNDING ZOOLOGIC GROUNDS <i>Sara K. Stoneburg, Kami Z Fox, Joe Smith, Jim Wellehan and April Childress</i>	280
SPERM COLLECTION AND ARTIFICIAL INSEMINATION IN FALSE GHARIALS (<i>Tomistoma schlegelii</i>) AT ARTIS AMSTERDAM ROYAL ZOO <i>Martine van Zijl Langhout, Dennis de Haan, Monique Versloot, Janos Szantho, Sjoerd van Kessel, Tom Hellebuyck, Margot van de Velde and Cyriel Ververs</i>	282
SEROLOGIC SURVEY OF SELECTED VIRAL PATHOGENS IN FREE-RANGING BROWN BEARS (<i>Ursus arctos</i>) FROM SLOVAKIA <i>Eliška Vitásková, Lenka Černíková, Ladislav Molnár, Ivan Holko, Peter Supuka, Eva Bártoová and Kamil Sedlák</i>	283
TREATMENT OF SEASONAL ATOPIC DERMATITIS IN A WHITE-FACED SAKI MONKEY (<i>Pithecia pithecia</i>) USING AQUASORB® <i>Sarah Weinberg, Cecilia Friberg, Sergi Segarra, Daniel Martinez-Puig and Kathryn C. Gamble</i>	284
A NOVEL ANAPLASMA SP. ASSOCIATED WITH ANEMIA IN GOPHER TORTOISES (<i>Gopherus polyphemus</i>) IN FLORIDA <i>James F.X. Wellehan Jr., Francy L. Crosby, Rose E. Raskin, Amy L. Weeden, Elliott R. Jacobson, Nicole I. Stacy, Mary B. Brown, Darryl J. Heard, April L. Childress, Alexandra M. Goe, Marjorie Bercier, Justin F. Rosenberg, Liliet Pertierra, Katherine A. Sayler, Anna M. Lundgren and Anthony F. Barbet</i>	287
NONTUBERCULOUS MYCOBACTERIAL LUNG INFECTION IN AN AFRICAN ELEPHANT (<i>Loxodonta africana</i>) AND A GREATER ONE-HORNED RHINOCEROS (<i>Rhinoceros unicornis</i>) CAUSED BY <i>Mycobacterium avium</i> ssp. <i>hominissuis</i> AND <i>Mycobacterium nebraskense</i> AND THE REACTION TO ANTE- AND POSTMORTEM TESTS <i>Christian Wenker, Fabia Wyss, Stefan Hoby, Giovanni Ghielmetti, Ute Friedel, Corinne Gurtner and Horst Posthaus</i>	288

CYSTIC PROSTATIC HYPERPLASIA IN A ROTHSCHILD GIRAFFE (*Giraffa camelopardalis rothschildi*) WITH CHRONIC HAEMATURIA.
Chantal Whitten and Karon Hoffmann291

CLINICOPATHOLOGIC FINDINGS OF INFLAMMATORY BOWEL DISEASE IN RED WOLVES (*Canis Rufus*)
Karen Wolf, Michael Garner, Will Waddell and Kadie Anderson293

PROGNOSTIC FACTORS OF PLASMA TRANSFUSIONS IN FAILURE OF PASSIVE TRANSFER NEONATAL NONDOMESTIC RUMINANTS AT THE SAN DIEGO ZOO SAFARI PARK 2014-2018
Daniela Yuschenkoff, Meredith and Lauren Howard294

SIGHTSEEING

Prague is among the most beautiful cities in Europe, with a rich architectural history dating back to 800 AD, an active cultural scene, some 26,000 trees turning golden in autumn, and features 88 protected natural spaces in or near the city. Here are some tips on what to see, do, or explore on your own time:

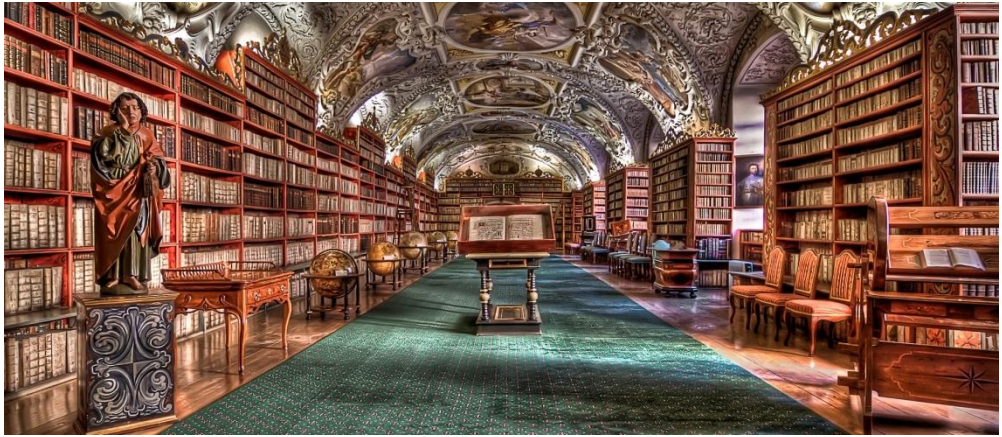
City, History and Architecture:

Prague's historical quarters each have their own character with distinct buildings, styles and atmospheres.



Prague Town Houses; © Monica Volpin

The medieval **Old Town** is centred on the historic market place and Prague's **astronomic clock**. Places of note are the **Klementinum**, one of the largest building complexes in Europe – first a Dominican monastery later a university – including the Astronomic tower and Prague's baroque library; and the **Powder Tower** – one of the 13 historic entrances to the city. Here you'll also find cafés and shops, but also quiet side streets to escape the city hustle – if you like exploring a city by just taking a random street and see what you discover, this is your place. Nearby is Prague's **Jewish Quarter**, a calmer space than the busy Old town, with a number of Synagogues and the Jewish Cemetery.



Library at the Klementinum; © izoca / pixabay

Malá Strana ('Lesser Town'), on the opposite side of the river stretches up to the castle and features Baroque buildings, historic churches, noble palaces, parks and gardens, views over Old Town and some very narrow streets winding uphill. Craftsmen and merchants settled here, next to the Castle, in the late 17 hundreds and the architecture reflects their more affluent status. The well-known **Charles Bridge**, featuring 30 statues connects the Lesser Town to Old Town.



Charles Bridge (Karlův most); © Ryan Lum

Prague Castle, on top of Castle Hill, is the largest castle complex in the world, covering some 70,000 square meters. First founded in 870 and expanded and remodelled frequently since, it collects buildings of a huge variety of architectural styles. Halls of the nobility, Basilicas, Prague's Cathedral and the Castle itself all belong to the complex.

Vyšehrad ('upper castle'), around 3 km south of Old Town is less touristic than the other quarters. Regardless, with its old fort, some of the oldest rotundas of the city, its own set of parks and churches, river and city views it also encapsulates and reflects much of the city's history. It is also a part of the city with some of the biggest architectural contrasts from the historic buildings to Czech architectural Cubism – the area around **Kovařovic Villa** – to some remains of Soviet history and influence (Prague Congress Centre).

Parks, Nature, Walking and Cycling:

Petřín in the middle of Prague is a hill brimful with parks, gardens and orchards, and offers great views over the city. **The Rosarium** and **the Seminary Garden** – with more than 2100 fruit trees – are especially noteworthy. If you don't feel like walking **The Petřín Funicular** runs all the way to the top of Petřín in a 10 minute interval from Malá Strana district. **Petrinska rozhledna** (Petřín Lookout Tower) on top of the hill is often described as a small version of the Eiffel Tower. **The Mirror Maze**, **the Hunger Wall** – a medieval defence wall – the Romanesque **Cathedral of Saint Lawrence**, and an astronomical observatory – **Štefánikova hvězdárna** (Stefanik's Observatory) – are all also located on Petřín.



Petřín; © Peter Tóth

Divoká Šárka ('Wild Šárka' ^[1]) is a Nature Reserve at the edge of the city, some 30 minutes by public transport. A wooded valley cut through by a stream, small but rocky hills to climb for views over both the city and the surrounding land and many bike and hiking paths. Bring sturdy shoes as paths are unpaved and partially steep.



Divoká Šárka; Wikipedia

¹ The legend of Šárka is among the most popular in Czech folklore and mythology: After the death of Queen Libuše, the last of a long line of matriachs, a civil war saw women and men pitched against each other. Šárka, one of the Amazonian Warriors, used trickery to kill Ctirad, the greatest fighter of the opposing all-male army. Full of regrets she later committed suicide by leaping of *divčící skok* (maiden's jump) - a rocky outcrop in the area of today's reserve. With the end of the war, patriarchal rule and a feudal system under the Přemyslid dynasty was installed. There is no historical evidence that any facet of the myth is actually true; but it was popularised during the Czech National Renewal, a patriotic movement under the Habsburg rule and is now part of the Czech cultural landscape.

Prague has two Botanical Gardens. The smaller, **the Botanical Garden of the Natural Sciences Faculty of Charles University**, is located near the city centre. First founded in the 1400s it was relocated several times and is in its current location since 1835. Today the 3.5 ha are open to the public but also serve as a teaching and study area for the university. At the Northern end of the city, **Praque's Botanical Garden** was established in 1968, and opened to the public in 1992. Part of the 70 ha area is used for scientific research into protecting natural sites and 12 ha of the park are designated as a nature reserve. The public part of the part includes the **Fata Morgana greenhouse**, simulating different environments; central-American savannahs and South-African semi-deserts, tropical rainforests (including a seven metre waterfall), and the environment of the Andes and the Cape in an artificially cooled part of the Greenhouse.

Museums, Festivals and Events:

The **National Gallery Prague** holds the largest art collection in the Czech Republic, stretching from paintings of the Middle Ages to Modern and Contemporary Art of the 19th, 20th and 21st centuries. Unlike many other art galleries the collection is housed in a number of historic buildings across Prague, including the **Convent of St. Agnes of Bohemia**, **Waldstein Riding School** and **Kinsky Palace**. You can visit specific buildings or buy a combined ticket.

Prague's **National museum** (Národní museum) combines, just as the National Gallery a number of different buildings focusing on various natural or social science aspects each. While the historical building of the National museum is still closed for renovations until the end of October, the **New Building of the National Museum** (Národní muzeum – Nová budova) displays a small proportion of the museums natural history collection. **Hrdlička Museum of Man** examines the evolution of humanity. This free, small and cosy University museum is right next to the Botanical Garden. **National Museum of Agriculture** explores both the past but also the future of our relationship with nature. It currently also hosts part of the **Czech Nature Photo 2018** exhibition.

Signal Festival, October 11th to 14th: This international festival of light art and emerging technologies brings installations to public spaces across Prague. Ranked as one of the best illumination festivals worldwide it allows you to explore Night-Time Prague between seven PM and midnight. Tickets to get close to the interactive installations are 150 CZK. More Information and impressions of past festivals at signalfestival.com/en/.

Many more events, including concerts, can be found at goout.net/en/prague/events/.

ORGANISATION

The **2018 Joint EAZWV/AAZV/Leibniz-IZW Conference** is organised by the European Association of Zoo and Wildlife Veterinarians (EAZWV, Liebefeld-Berne, Switzerland), the American Association of Zoo Veterinarians (AAZV, Yulee, Florida, USA), and the Leibniz Institute for Zoo and Wildlife Research (Leibniz-IZW, Berlin, Germany), in cooperation with Prague Zoo (Prague, Czech Republic).

Reviewers and session chairs

Copper Aitken-Palmer, Matt Allender, Kay Backues, Folko Balfanz, Angela Bruns, Nancy Carpenter, Alberto Casado Gómez, Baptiste Chenet, Andrew Cushing, Michelle Davis, Jennifer D'Agostino, Katie Delk, Gabby Drake, Yedra Feltrer, Frank Göritz, Alex D. Greenwood, Trine Hammer-Jensen, Chris Hanley, Therese Hård, Jean-Michel Hatt, Kelly Helmick, Robert Hermes, Clay Hilton, Lauren Howard, Karin Y. Lemberger, Annette Liesegang, Nancy Lung, William Magnone, Stephanie McCain, Christine Molter, Baptiste Mulot, Natalie Mylniczenko, Lisa Naples, Don Neiffer, Luis Padilla, Joanne Paul Murphy, Wouter Pieters, Geoffrey Pye, Maja Ruetten, Sanna Sainmaa, Endre Sos, Taina Strike, Claudia Szentiks, Rachel Thompson, Roman Vodička, Christian Walzer, Lisa Wiegmann, Trevor Zachariah

Organising committee

Josepha Prügel (Leibniz-IZW), Germany
Stefanie Lenz (Leibniz-IZW), Germany
Steven Seet (Leibniz-IZW), Germany
Alex D. Greenwood (Leibniz-IZW), Germany
Stephanie Sanderson (EAZWV), UK
Hugo Fernández Bellon (EAZWV), Spain
Adine Nicholson (AAZV), USA
Kathy Judge Blacklock (AAZV), USA
Robert Hilsenroth (AAZV), USA

Scientific programme committee

Kristin Mühldorfer (Leibniz-IZW), Germany
Alex D. Greenwood (Leibniz-IZW), Germany
Josepha Prügel (Leibniz-IZW), Germany
Hanspeter Steinmetz (EAZWV), Switzerland
Hugo Fernández Bellon (EAZWV), Spain
Sam Rivera (AAZV), USA
Allison D. Tuttle (AAZV), USA
Alicia Hahn (AAZV), USA
Kristen Phair (AAZV), USA
Samantha Sander (AAZV), USA

Local organising committee (Prague Zoo, Czech Republic)

Lucie Šašková
Roman Vodička
Jaroslav Šimek

CONTACT



PRAGUE ZOO

Contact: Lucie Šašková
U Trojského zámku 120/3
171 00 Praha 7
Czech Republic

E-Mail: saskova@zoopraha.cz



Leibniz Institute for Zoo and Wildlife Research

IN THE FORSCHUNGSVERBUND BERLIN E.V.

Contact: Josepha Prügel, Steven Seet
Alfred-Kowalke-Straße 17
10315 Berlin
Germany

E-Mail: 2018@zoowildlifehealth.org
Phone: (+49) 30 51 68 127 (Prügel)
Mobile: (+49) 177 857 26 73 (Seet)
Fax: (+49) 30 51 26 104



Contact: Robert Hilsenroth
581705 White Oak Road
Yulee, FL 32097 USA

Phone: (904) 225-3275
Fax: (904) 225-3289
E-Mail: admin@aazv.org



Contact: Hanspeter Steinmetz
Walter Zoo
Neuchlen 200
9200 Gossau
Switzerland

E-mail: president@eazwv.org

All rights reserved, particularly for pictures. It is not permitted to reproduce any part of this booklet by photocopy, microfilm, internet or any other means without written permission of the IZW. The use of product and trade names or other entities in this booklet does not justify the assumption that these can be freely used. They may represent registered trademarks or other legal entities even if not marked as such.

Editing and layout: Christof Häberle, Stefanie Lenz, Josepha Prügel
Cover: Przewalski's horse, © Tomáš Adamec
Printing: copy print Kopie & Druck GmbH, printed on recycled paper
Publisher: Leibniz Institute for Zoo and Wildlife Research (IZW),
Post office box 700430, 10324 Berlin, Germany, www.izw-berlin.de

NOTES

NOTES
